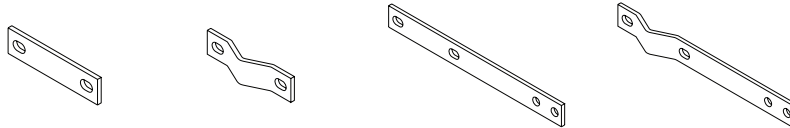


## Heavy Duty Mounting Brackets

Made completely of high quality 1/4" thick heavy duty 304 stainless steel for copper systems, with aluminum adaptors for aluminum systems, the modular construction of this mounting hardware system offers incredible strength, flexibility and utility for a wide variety of applications.



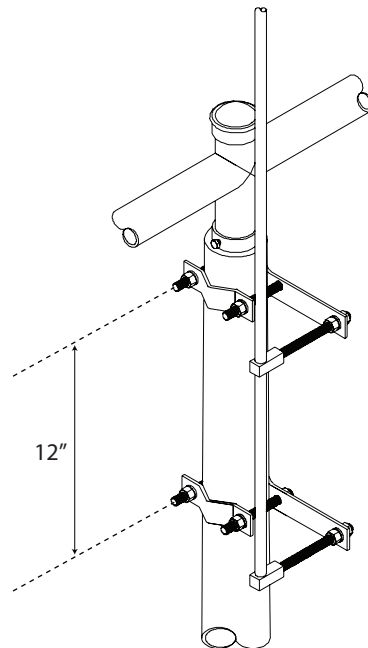
### Bracket Assembly

**Selecting the appropriate Heavy Duty Mounting Brackets and Hardware for your application is easy!**

Remember, two BKT assemblies- typically spaced twelve inches apart, are needed to provide support for TerrasStat® air terminals. To accommodate for angled or tapered mounting, order the adjustable BKT-AT series or calculate two extension lengths to create almost any non-parallel mount slant.

< For Typical Mounting >

BKT-EX Series



Example of use: 4" Extended Brackets



BKT-AT Series may be easily adjusted for Angled or Tapered Mounting. For details, refer to [pg. 2-2](#) and [2-3](#).